



Incremental Costs

(per unit)

Riverdale ~ \$110,000

- Envelope ~ \$20,000
- Solar Thermal ~\$45,000
- PV ~\$45,000



Mill Creek ~ \$68,000

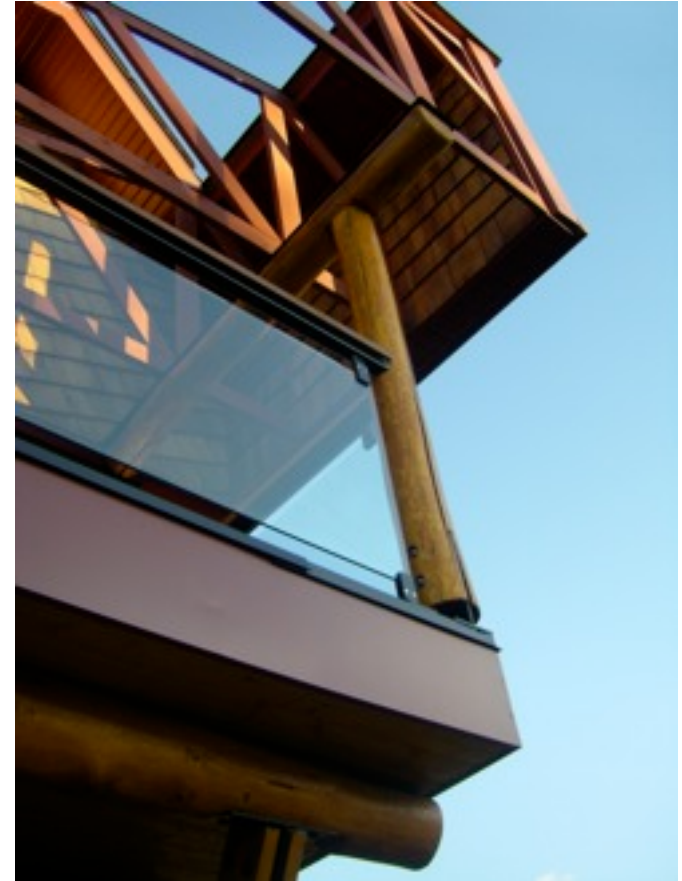
- Envelope ~ \$16,000
- Solar Thermal ~\$9,000
- PV ~\$50,000
- Deduct Avoided Costs ~ -\$8000

Belgravia ~ \$48,000

- Envelope ~ \$16,000
- Solar Thermal ~\$0
- PV ~\$50,000
- Deduct Avoided Costs ~ -\$8000

Sweet spots

- Energuide 86(Alberta)
- ~10,000 kWh/year
 - ~3000 kWh/year for Heating
 - ~3000 kWh/year for DHW
 - ~4000 kWh/year for lighting and appliances.



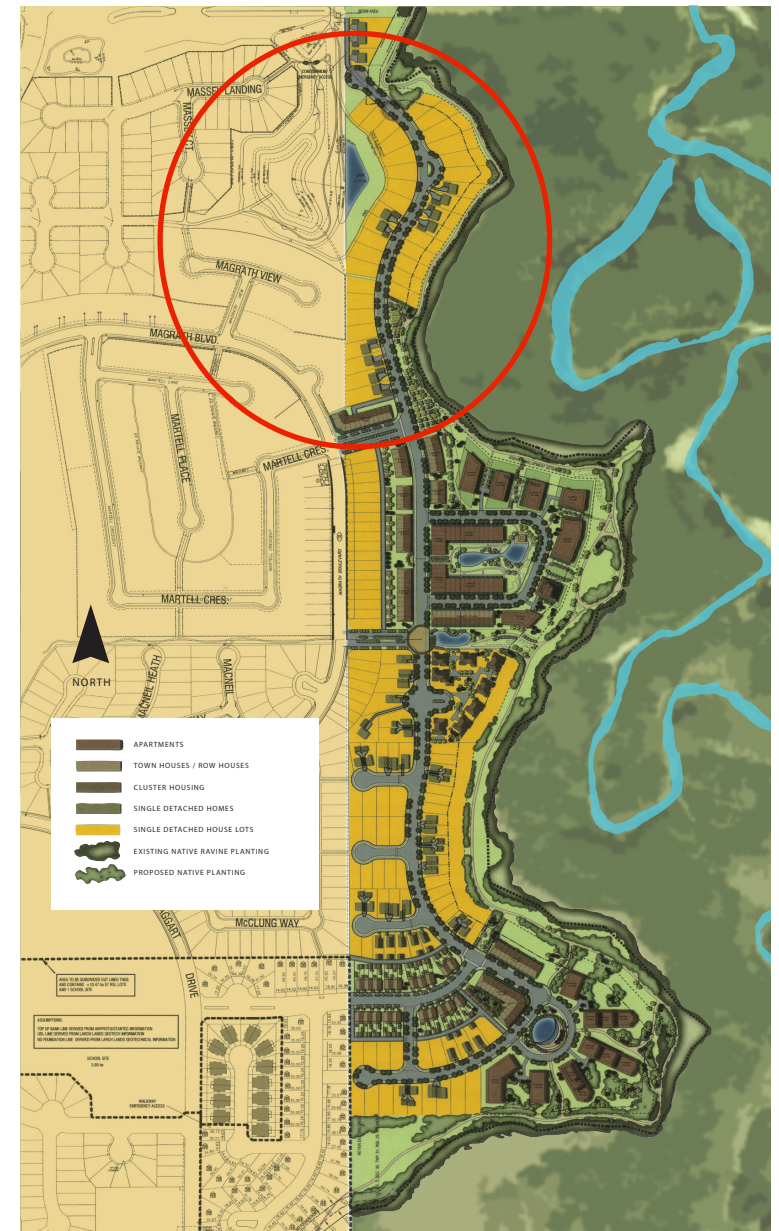
Alberta Rebate

- \$10000 for Energuide 86 goes a long way toward the incremental cost of achieving Energuide 86
- The balance will likely pay for itself in energy savings at today's energy costs.
- Very simple clear program



Larch Park

- Minimum R2000, BuiltGreen Gold or LEED Gold (Energuide 80)
- Lots from first draw sold out very quickly
- Waiting list for next draw



 Larch
Park at Magrath
www.larchpark.ca

 MELCOR
DEVELOPMENTS LTD.

Artist representation only. Developer reserves the right to make changes and modifications. Refer to approved engineering plans to confirm all lot information.

Selling Near Net Zero

- Many customers comes to us saying- “I’m interested in a very energy efficient house but I’m not willing to go to net zero”
- Almost everyone wants to be solar ready
- Hard to sell on simple economics



Selling Net Zero

- More likely to be introduced at the high end
- Prius example
- BMW's have lousy paybacks
- Hardest houses to fix when we finally get serious about this will be those most recently built.



Is it worth it?

- Lots of interest
- Never been busier
- Learned a ton





riverdalenetzero.ca

greenedmonton.ca/MillCreekNetZeroHome

habitat-studio.com