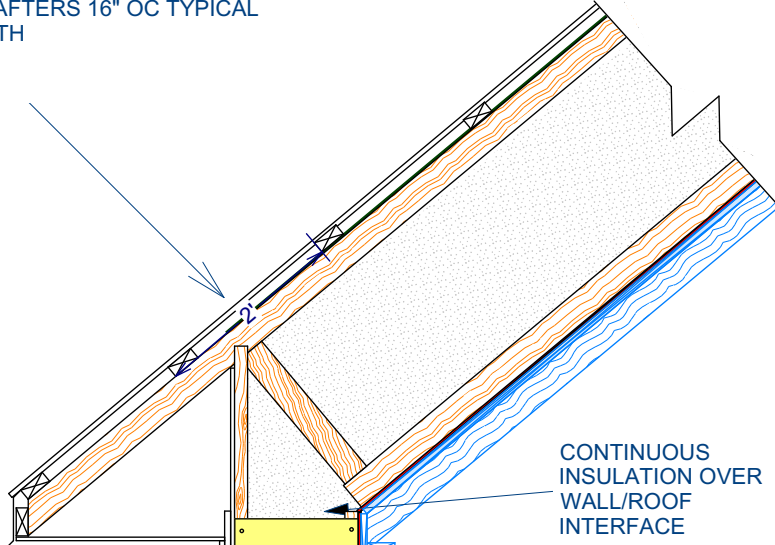


547 Montague Wall Section Typical

29GA METAL ROOFING
 2X4 PURLIN 24" OC
 VAPOUR OPEN WEATHER BARRIER MEMBRANE
 24' HIGH HEEL PRE ENG TRUSSES 24" OC TYPICAL
 R-90 CELLULOSE INSULATION
 7/16" OSB AIR/VAPOUR BARRIER C/W TAPED JOINTS
 2X4 ORIGINAL RAFTERS 16" OC TYPICAL
 FIBREBOARD LATH
 5/8" PLASTER



RED Shading indicates continuous Air/Vapour barrier components

1/2" X15.5"X12" PLYWOOD GUSSET 27" O/C GLUED AND NAILED TYP

CONTINUOUS HIGH QUALITY INSULATION AT FOUNDATION/FLOOR/WALL JUNCTION

CONC PARGING ON EXP METAL LATH
 TYPAR WEATHER BARRIER
 1/2" PWF PLYWOOD
 8" XPS TYPE 2, TWO 4" LAYERS R-40
 GRACE BITUTHENE MEMBRANE
 9" REINF CONCRETE WALL

EXTENT OF EXCAVATION ~ 24"

2' FROST SKIRT 4" XPS TYPE 2 R20
 NEW 3/4 DOWN LIMESTONE GRAVEL
 5" POLY WEeping TILE

CONTINUOUS INSULATION OVER WALL/ROOF INTERFACE

5/8" CEMENTIOUS PLASTER
 1/2" FIBREBOARD LATH
 2X4 STUDS 16" OC C/W DENSE BLOWN CELLULOSE R-12
 3/4" HORIZ 1X8" SHIPLAP SPF SHEATHING
 3/8" DFP PLYWD AIR/VAPOUR BARRIER C/W TAPED JOINTS
 16" LARSEN TRUSS, C/W BLOWN CELLULOSE TYP
 7/16" VAPOUR OPEN FIBREBOARD SHEATHING
 TYPAR WEATHER BARRIER MEMBRANE
 1X4 SPF DIAG STRAPPING
 EXPANDED METAL LATH
 5/8" CONCRETE STUCCO TYPICAL
 ASSEMBLY U-VALUE ~ .081 - R70

3/4" HARDWOOD FLOOR
 3/4" 1X8 SHIPLAP DECK
 2X10 "BEAM FILL" FIR JOIST 16" OC

4" REINF CONC FLOOR
 8" XPS TYPE 2 FOAM IN TWO 4" OVERLAPPED LAYERS R40
 10 MIL POLY VAPOUR BARRIER C/W CAULKED&TAPED JOINTS
 6" COMPACTED GRANULAR FILL
 SLAB THERMALLY BROKEN FROM FOOTING WITH 1.5/.5" XPS

EXISTING FOOTING - 30X10"
 REINF CONCRETE STRIP